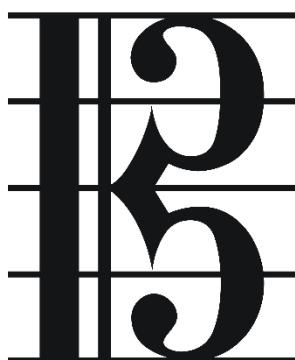


Name _____

An Introduction to Alto Clef



Alto Clef is a C Clef. The clef marks the line where middle C lies. As you can see, middle C lies on the middle line of the clef. The clef covers a fifth either side of C. So the top line is G above middle C and the bottom line is F below middle C.

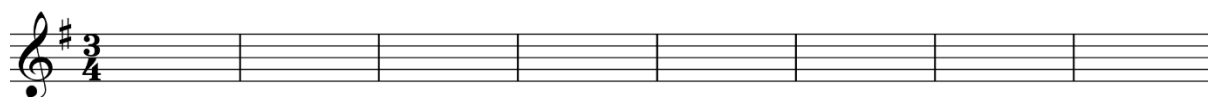
See if you can play this melody on a keyboard. Watch out for the F# !!



9



Now see if you can write the tune out at the same pitch in Treble clef:



9

